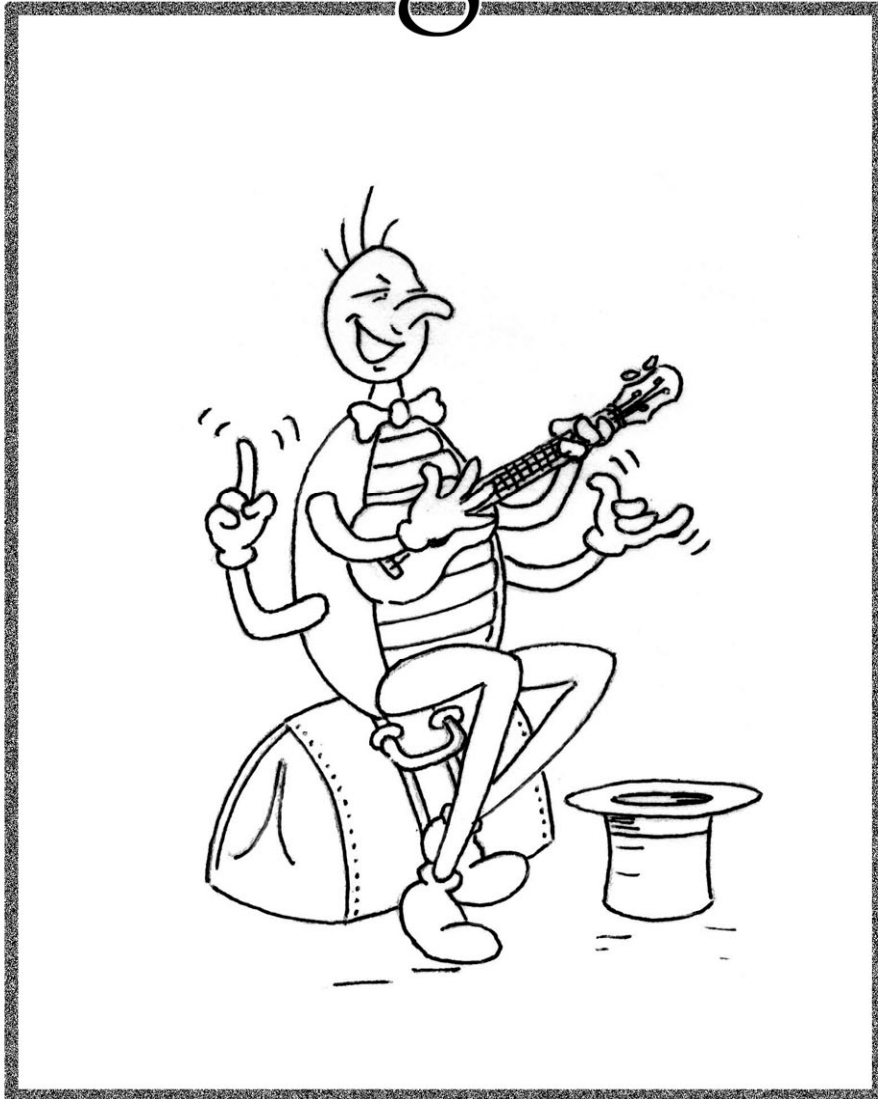


Fleabag Music



Songs for Uke Gatherings

FIRST EDITION
October 2003

Fleabag Music

<u>Song</u>	<u>Page</u>
Aloha Oe	1
Hello Ma Baby	2
Home On The Range	3
Ida Sweet As Apple Cider	4
I've Been Working On the Railroad	5
In the Good Old Summertime	7
Red River Valley	8
Shine On Harvest Moon	9
Wait til the Sun Shines, Nellie	10
Won't You Come Home, Bill Bailey	11

The Fleabag was created through the efforts of a volunteer group of ukulele playing musicians, artists, teachers and supporters for the benefit of the entire ukulele community. Copies may be downloaded for free by visiting any one of the following sites:

- The Ukulele Hall of Fame Museum -- <http://ukulele.org>
- The 4th Peg -- <http://4thpeg.com>
- EZ Folk -- <http://www.ezfolk.com/uke/>

—
This work was in Public Domain at the time of arranging and printing. It may be copied and distributed as long as it is not part of, or in whole, a profit generating publication.
—

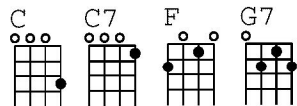
Published with support from the Ukulele Hall of Fame Museum, a non-profit organization dedicated to the preservation and promotion of ukulele history and culture. On the web at: <http://ukulele.org>.



Aloha 'Oe

Queen Lili'uokalani

C Tuning



Ukulele

C F C

Proud - ly sweep the rain clouds by the cliffs as
Ha - 'a - heo e_ka - u - a i na pa - li. Ke

5 G7 C F

on - ward it glides through the trees. It seems to be fol - low - ing the
nihil a 'ela i ka - na - hele. E u - hai ana pa - ha i ka

11 C F G7 C C7 F

li - ko, the a - hi - hi le - hu - a of the vale. Fare - well to thee. Fare -
li - ko. Pu - a a - hihile - hu - a o u - ka. A - lo - ha 'Oe. A -

19 C G7 C C7

well to thee. Thou charm - ing one who dwells a - mong the bow - ers. One
lo - ha 'Oe. E_ke o - na o - na no - ho i - ka li - po. One

25 F C G7 C

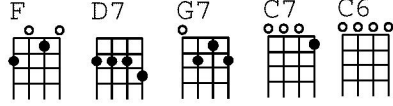
fond em - brace be - fore I now de - part, un - til we meet a - gain.
fond em - brace, a ho'i a 'e - au un - til we meet a - gain.



Hello! Ma Baby

Howard and Emerson

C Tuning



Ukulele

Hel-lo Ma Ba-by! Hel-lo ma hon-ey. Hel-lo ma rag-time gal.
 Send me a kiss by wire. Ba-by my hearts on fire!
 If you re-fuse me hon-ey you'll lose me. Then you'll be left a-lone. Oh Ba-by
 tel-e-phone and tell me I'm your own.



Home On The Range

Brewster Higley
Daniel E. Kelley

C Tuning

C F G C7 G7 D7 Fm Dm7 Am

Ukulele

Oh give me a home where the buf - fa - lo roam, Where the deer and the
How of - ten at night when the hea - vens are bright, by the light of the

an - te - lope play. _____ Where sel - dom is heard a dis - cour - a - ging
shim - mer - ing stars, _____ I've stood there a - mazed and thought as I

word, and the skies are not cloud - y all day. _____
gazed that there glo - ry ex - ceeds that of ours. _____ Home, home on the

range! _____ Where the deer and the an - te - lope play _____ Where sel - dom is

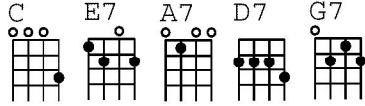
heard a dis - cour - a - ging word, and the skies are not clou - dy all day. _____



Ida, Sweet As Apple Cider

Eddie Leonard
Eddie Munson

C Tuning



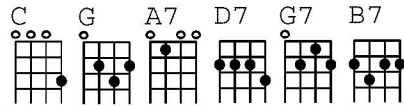
Ukulele

I - da, sweet as ap - ple ci - der. Sweet - er than all I
 know. Come out in the sil - vry moon - light of love we'll
 whis - per so soft and low. Seems though can't live with - out you.
 Lis - ten my hon - ey do. I - da I i - da -
 lize ya. Oh, I love you I - da 'deed I do.



I've Been Working On the Railroad

Traditional



C Tuning

Ukulele

G G7 C G

I've been work ing on the rail road all the live long day._____

9

A7 D7

I've been work - ing on the rail - road just to pass the time a - way._____ Can't you

18

G C B7 C

hear the whist - le blow - ing? Rise up so ear - ly in the morn._____ Can't you

26

G D7 G G

hear the cap - tain shout - ing, "Din - ah blow your horn!"_____ Din - ah won't you

34

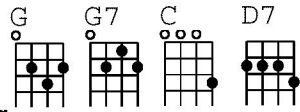
C D7 G

blow? Din - ah won't you blow? Din - ah won't you blow your horn?_____

41

C D7 G

Din - ah won't you blow, Din - ah won't you blow, Din - ah won't you blow your horn?_____



G C Tuning

D7

49



Some-one's in the kit-chen with Din - ah. Some-one's in the kit-chen I know.____

G G7 C G D7 G

57



Some-one's in the kit-chen with Din - ah strum - ming on the old ban - jo and sing - ing

G D7 G

65



"Fee fi fid - dley I oh. Fee fi fid - dley I oh._____ Fee

G7 C G D7 G

74



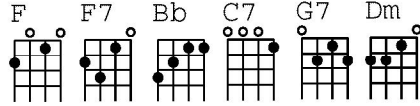
fi fid - dley I oh! Strum - ming on the old ban - jo._____



In the Good Old Summertime

Ren Shields
George Evans

C Tuning



Ukulele

Musical notation for the first line of the ukulele part, including a treble clef, a key signature of one flat, and a 3/4 time signature. The melody consists of quarter and eighth notes. Chords F, F7, Bb, F, and C7 are indicated above the staff.

In the Good Old Sum-mer - time._____In the Good Old Sum-mer - time._____

Musical notation for the second line of the ukulele part, starting at measure 9. Chords F, Dm, G7, and C7 are indicated above the staff.

Strol - ling down a sha dy lane with your - ba - by mine._____ You

Musical notation for the third line of the ukulele part, starting at measure 17. Chords F, F7, Bb, F, and C7 are indicated above the staff.

hold her hand and she holds yours and that's a ver - y good sign._____ that

Musical notation for the fourth line of the ukulele part, starting at measure 25. Chords F, Dm, G7, C7, and F are indicated above the staff.

she's your toot - sie woot - sie in the Good Old Sum - mer - time._____



Red River Valley

Traditional

C Tuning

F Bb F7 C7

Ukulele

F C7 F

From this val - ley they say you are go - ing. _____ We will
 Come and sit by my side er' you leave me. _____ Do not

5 C7 F F7

miss your bright eyes and sweet smile. _____ For they say you are tak - ing the
 hast - en to bid me a - dieu. _____ But re - mem - ber the Red Ri - ver

11 Bb F C7 F

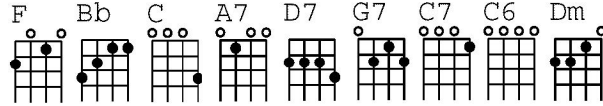
sun - shine _____ that has brigh - tened our path - ways a - while. _____
 Val - ley _____ and the one who has loved you so true. _____



Shine On Harvest Moon

Nora Bayes
Jack Norworth

C Tuning



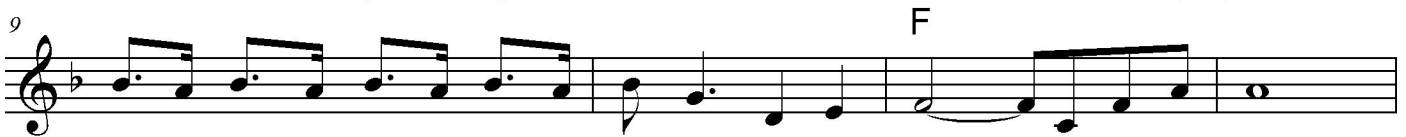
Ukulele



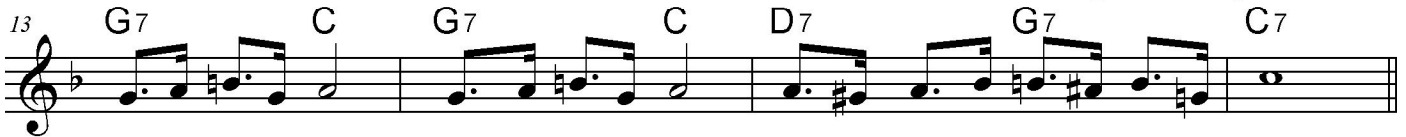
The night was migh - ty dark and you could hard - ly see for the moon re - fused to



shine. Cou - ple sit - ting un - der - neath a wil - low tree for love they pined.



Lit - tle maid was kind of 'fraid of dark - ness so she said "I guess I'll go."



Boy be - gan to sigh. Looked up at the sky. Told the moon his lit - tle tale of woe.



Shine on, shine on Har - vest Moon up in the sky. I ain't had no lov - in' since



Jan - u - ar - y Feb - ru - ar - y June or Ju - ly. Snow time ain't no time to



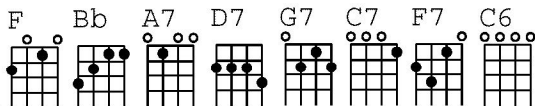
stay out - doors and spoon. So, Shine On, Shine On Har - vest Moon, for me and my gal.



Wait 'Till the Sun Shines Nellie

Lyric Andrew B. Sterling
Music Harry von Tilzer

C Tuning



Ukulele



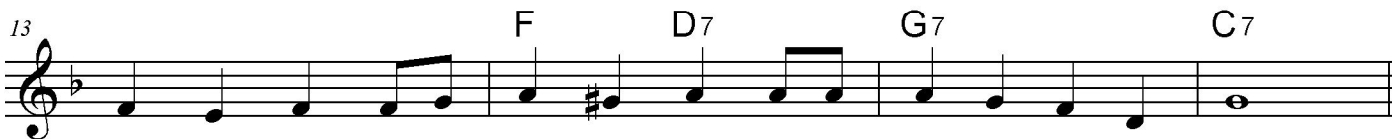
On a Sun-day morn sat a maid for-lorn with her sweet-heart by her



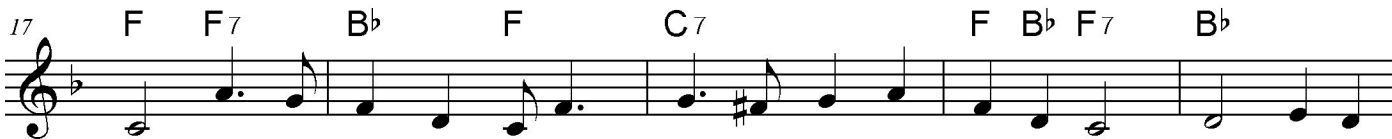
side. Through the win-dow pane she looked at the rain. "We must stay home, Joe." she



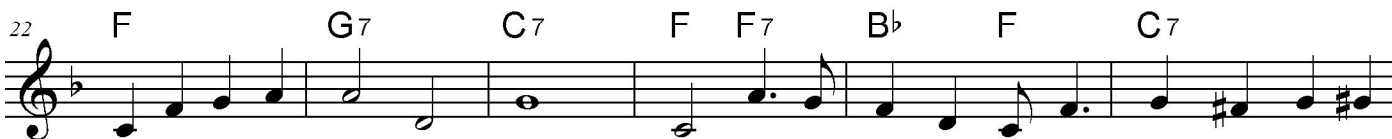
cried. "There's a pic-nic, too, at the old point view. It's a shame it rained to-day." Then the



boy drew near, kissed a-way each tear. And she heard him soft-ly say,



"Wait 'Til the Sun Shines, Nel-lie. And the clouds go drift-ing by. We will be



hap-py Nel-lie. Don't you cry. Down lov-ers lane we'll wan-der, Sweet-hearts you and



I. Wait 'Til the Sun Shines Nel-lie, by and by."



Won't You Come Home Bill Bailey

Hughie Cannon

C Tuning

C C7 F A7 D7 G7

Ukulele

4

9

13

Won't you come home Bill Bai-ley? Won't you come home? I moaned the whole night
 lo - ng. I'll do the cook - in hon - ey. I'll pay the rent. I know I done you wro - ng. Re -
 mem - ber that rain - y eve - nin' I threw you out with noth - in' but a fine toothed comb? I
 know I'm to blame. Now, ain't that a shame? Bill Bai - ley won't you please come home?